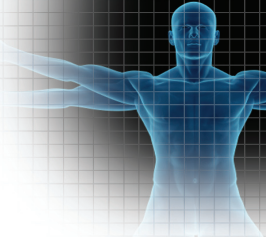


Sixth Annual Simulation Conference

A Best Practices Simulation Conference
April 12, 2012



Bridging the Borders: Institutional & Interdisciplinary Collaboration

Allied health professionals, pre-hospital responders, physicians, nurses, emergency management personnel, simulation technicians/specialists and health care educators are invited to attend this event.

Presented By:



Special Keynote Address:

"A Closer Look at INACSL Simulation Standards"

Presented by Cheryl Feken, MS, RN • Tulsa Community College

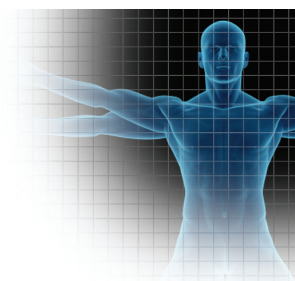
The International Nursing Association for Clinical Simulation and Learning (INACSL) has developed the standards for best practice in simulation. It consists of a framework for the following simulation-related topics, such as Terminology, Professional Integrity of Participant, Participant Objectives, Facilitation Methods, Simulation Facilitator, Debriefing Process, and Evaluation of Expected Outcome. This is a result of a two-year collaborative project including input from Nursing Simulation Leaders, the INACSL membership, and expert peer reviewers from healthcare simulation. These standards can be utilized to provide a framework for simulation programs, guide research projects, and attract potential donors.

The mission of INACSL is to promote research and disseminate evidence based practice standards for clinical simulation methodologies and learning environments.

Keynote Address: A Closer Look at INACSL Simulation Standards

Cheryl Feken, MS, RN • Tulsa Community College • Tulsa, OK

Ms. Feken is the clinical simulation coordinator for Tulsa Community College. She participated in the NLN/Laerdal research project in 2003-2006 as a site coordinator and was a reviewer for the NLN/Laerdal SimMan scenarios, as well as the VitalSim scenarios. Ms. Feken has served on the Oklahoma Health Care Workforce Center's simulation planning committee for four years and co-chaired the committee for two years. She is on the Board of Directors for the International Association of Clinical Simulation Learning (INACSL) and participated in the development of the Standards of Practice for Simulation published August 2011 for clinical simulation in nursing.



Session #1 (Lecture): Simulation Opportunities for Educators

Heather Love, MS, RN, CNE • University of Oklahoma, College of Nursing • Lawton/Duncan, OK

Heather Love has served as a nurse educator for 14 years and is currently an assistant professor at the University of Oklahoma College of Nursing. She primarily works at the Lawton and Duncan campuses in Oklahoma. Ms. Love combines her passion for NCLEX preparation activities with the use of simulation and the placement of simulation activities to help improve student's success throughout their nursing program and on their NCLEX examination. The ability to use moulage and simulation scenarios to turn identified weaknesses into simulation activities that engage students in remediation of learning has become a huge focus of Ms. Love's career goals.

Session #1 (Hands-On): Standardized Patients

Kim Craig, RN • St. John Health System • Tulsa, OK

With 23 years of nursing experience within multiple clinical settings, Ms. Craig is both a clinical instructor and a simulation program coordinator at St. John Medical Center. She served as the initial educator for using simulation for new graduate nurses and has developed many simulation scenarios at St. John, making her instrumental in the development and initiation of the current standardized patient program at St John.

Stacie Merritt, RN, RN-BC, BSN • St. John Health System • Tulsa, OK

Ms. Merritt has 22 years of nursing experience in multiple clinical settings—including seven years as a training officer utilizing simulation training for the US Navy/Navy Reserve. Currently, she is employed as a clinical instructor at St. John Medical Center. Her role at St. John's also includes being a simulation program coordinator, where Ms. Merritt utilizes a high-fidelity simulator as well as standardized patients in simulation training with licensed RN's and CNA's. She spearheaded the development and initiation of the current standardized patient program at St John.

Session #1 (Hands-On): Friday Night Lights...On-Field Care of the Potential Spine Injured Athlete Scenario

Jackie Langford, BFA, LP • Healthcare Simulation Center Collin College • McKinney, TX

Mr. Langford has served in the fire and EMS profession for over 22 years, serving as a firefighter/paramedic. Early in his career, he was offered the opportunity to help teach classes, and in doing so, found his passion in teaching and helping others to learn. He began a second/concurrent career in fire and EMS education and has served in that capacity for over 21 years.

Session #1 (Hands-On): Closing the Gap - On Scene Transition Scenario

Captain Michael Baker, NREMT-P, BA, AS • Tulsa Fire Department • Tulsa, OK

Mr. Baker is the director of emergency medical services for the Tulsa Fire Department. A 16 year member of the department, he oversees the department's EMS response operations, ensures provider credentialing of over 650 members, develops and monitors continuing education, and works closely with the office of the medical director to implement EMS system protocols. A nationally registered paramedic for more than 20 years, Mr. Baker is an EMS instructor and has worked to increase the clinical competency of the Tulsa Fire Department's personnel through the application of simulation technology.

Session #1 (Hands-On): Up Close & Personal with Manikins

Laerdal • METI

Product specialists from Laerdal and METI will teach basic software use, manikin maintenance and repair to groups in a smaller setting to allow for in-depth questions from attendees. No continuing education credits will be offered for this session.

Session #2 (Lecture): Collaborative Success Stories

Linda Loftin, RN, BSN • Muskogee Community Hospital • Muskogee, OK

Ms. Loftin currently serves as the clinical education coordinator of Muskogee Community Hospital (MCH) where she is responsible for overseeing the educational needs of all hospital employees and serves as a student education liaison for all students who come to MCH for clinical/educational experience. Ms. Loftin has over 30 years of clinical experience in a wide variety of nursing settings in Oklahoma including: emergency nursing, cardiovascular nursing, staff development, surgical intensive care, home care and rehab nursing.

Carol McKenzie, PhD, MSN, CNM • Northwestern Oklahoma State University, Division of Nursing • Alva/Enid/Woodard, OK

Dr. McKenzie has a BS in Nursing from Texas Woman's University, an MSN and CNM in Maternal-Newborn Nursing from Yale University, and a PhD in Allied Health Teacher Education and Administrative Leadership from Texas A&M University. She is currently professor and chair for the division of nursing at Northwestern Oklahoma State University. Her research areas of interest are proactive reflective practice in simulation, EMR implementation and bio-Touch. She has multiple publications and speaks locally, regionally, nationally and

(Continued)

Session #2 (Hands-On): A Collaborative Surgery

W. Stephen Eddy, DO, MPH • OSU Center for Health Sciences, College of Osteopathic Medicine • Tulsa, OK

Since 2005, Dr. Eddy has diligently served as the director of continuing medical education at the Oklahoma State University Center for Health Sciences (OSUCHS) in the College of Osteopathic Medicine. He is board certified in family medicine and serves as a professor of family medicine for the department of family medicine at OSUCHS. Dr. Eddy's expertise includes the area of clinical skills, with 27 years of experience established from the various roles of being a coordinator, lecturer and lab instructor.

Ann Robinson, BS, RMA, RPbt, LPN • Tulsa Technology Health Sciences Center • Tulsa, OK

Working as a laboratory coordinator for Tulsa Technology Health Sciences Center, Ms. Robinson has a health sciences background with 20 years of experience with patients, students and health care providers through hands-on involvement in educational programs and direct patient care. She coordinates clinical labs, which contributes to teaching students in 13 different health-related occupations. Ms. Robinson is also involved in the development and administration of laboratory experiences and clinical practical exams using a wide variety of delivery systems including simulation technology and e-learning systems.

Session #2 (Hands-On): QSEN Scenario

Christine Thoman, MS, RN • Tulsa Community College • Tulsa, OK

Ms. Thoman is an assistant professor of Nursing at Tulsa Community College. Her nursing education experience has included perioperative and acute care nursing. For the past four years Ms. Thoman's primary teaching responsibility has been in the nursing simulation laboratory.

Stephanie Merritt, MS, RN • Tulsa Community College • Tulsa, OK

Ms. Merritt is an assistant professor at Tulsa Community College in the nursing department. She has worked in nursing education since 1998 and has experience educating students from nurse aides to RNs. The simulation lab has been Ms. Merritt's primary focus during the last several years.

Session #2 (Hands-On): The Art of Moulage

Jackie Langford, BFA, LP • Healthcare Simulation Center, Collin College • McKinney, TX

See biography information on page 2 for Session #1 (hands-on).

Session #2 (Hands-On): Up Close & Personal with Manikins

Laerdal • METI

Product specialists from Laerdal and METI will teach basic software use, manikin maintenance and repair to groups in a smaller setting to allow for in-depth questions from attendees. No continuing education credits will be offered for this session.

Session #3 (Lecture): Simulation Opportunities for Hospitals

Kim Craig, RN & Stacie Merritt, RN, RN-BC, BSN • St. John Health System • Tulsa, OK

See biography information on page 2 for Session #1 (hands-on).

Session #3 (Hands-On): QSEN Scenario

Christine Thoman, MS, RN & Stephanie Merritt, MS, RN • Tulsa Community College • Tulsa, OK

See biography information above for Session #2 (hands-on).

Session #3 (Hands-On): Cardiac Arrest Scenario

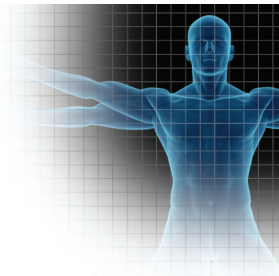
Gina Riggs, BS, EMT-P • Kiamichi Technology Center • Poteau, OK

Ms. Riggs has been the EMS director for Kiamichi Technology Center in Southeast Oklahoma for 20 years and has been active in EMS for 34 years. She is presently serving on the State EMS Advisory Council and as national faculty for the American Heart Association. Ms. Riggs has been instrumental in creating a successful distance education paramedic program across Oklahoma, as well as a multi-purpose mobile disaster response and EMS simulation trailer.

Session #3 (Hands-On): The Art of Moulage

Jackie Langford, BFA, LP • Healthcare Simulation Center, Collin College • McKinney, TX

See biography information on page 2 for Session #1 (hands-on).



(Continued)

Session #3 (Hands-On): Up Close & Personal with Manikins

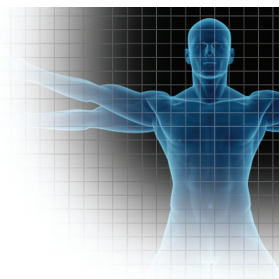
Laerdal • METI

Product specialists from Laerdal and METI will teach basic software use, manikin maintenance and repair to groups in a smaller setting to allow for in-depth questions from attendees. No continuing education credits will be offered for this session.

Session #4 (Lecture): Finding Grant Money

Daniel Marangoni, BA • Tulsa Community College • Tulsa, OK

Since coming to Tulsa in 2008, Mr. Marangoni has served as grant writer for the Office of Grant Development at Tulsa Community College (TCC). In this position, he has secured over \$5 million in funding for the college through federal, state, local, and foundation grants. His grant experience includes working with the U.S. Department of Education, Labor and Justice, the Oklahoma Department of Commerce and the Oklahoma State Regents for Higher Education among others. Mr. Marangoni teaches English for TCC and serves as a professional development instructor in grant writing. He is a member and past presenter of the Council for Resource Development.



A Special Thanks to Continuing Education Sponsors



Oklahoma Nurses Association is an approved provider of continuing nursing education by the Texas Nurses Association, an accredited approver by the American Nurses Credentialing Center's Commission on Accreditation.

The OSU-COM Office of Continuing Medical Education has requested that the American Osteopathic Association Council on Continuing Medical Education approve this program for 5 AOA Category 2A CME credits. Approval is currently pending.

The Oklahoma State Department of Health - Emergency Medical Service Division approves this conference for continuing education credits for Emergency Medical Technicians.

THE AGENDA

8:00 - 9:00 am	Registration, Networking & Breakfast
9:00 - 9:15 am	Welcome & Introductions
9:15 - 10:15 am	Keynote Address: "A Closer Look at INACSL Simulation Standards"
10:15 - 10:30 am	Break
10:30 - 11:30 am	Session #1 Lecture or Hands-on Scenario Selection
11:30 - 1:00 pm	Lunch / Regional Collaboration Discussions
1:00 - 2:00 pm	Session #2 Lecture or Hands-on Scenario Selection
2:00 - 2:15 pm	Break
2:15- 3:15 pm	Session #3 Lecture or Hands-on Scenario Selection
3:15 - 3:30 pm	Break
3:30 - 4:30pm	Session #4: Finding Grant Money (all attendees)
4:30 - 5:00 pm	Evaluation & Adjournment

ADDRESS

Tulsa Tech - Health Sciences Center
3350 S. Memorial Drive
Tulsa, OK 74145
(918) 828-1200



HOTEL INFORMATION

Attendees that require overnight accommodations in Tulsa may want to contact the following hotels, which are in proximity to the conference's facilities:

Fairfield Inn

3214 S. 79th East
Tulsa, OK 74145
Phone: (918) 663-0000
Group Rate: \$79.00 per night + tax
Group block code: OHCWC

To receive the discounted rate, reserve your room by April 2. Breakfast is included.

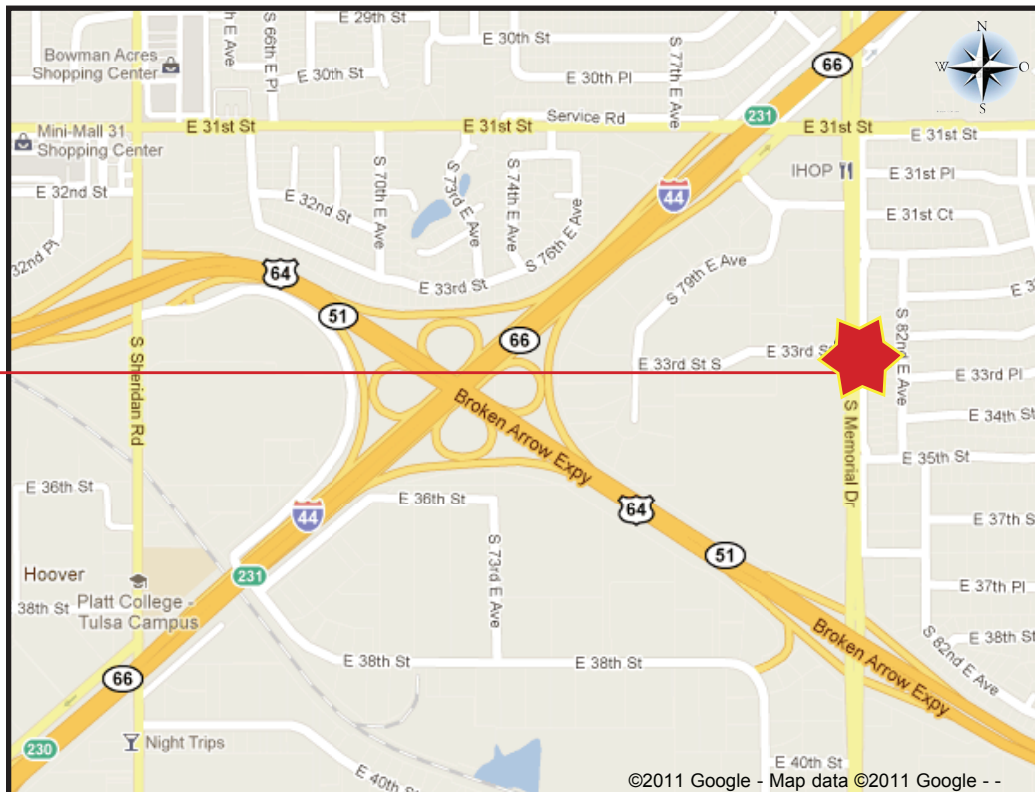
Sleep Inn

8021 E. 33rd Street
Tulsa, OK 74145
Phone: (918) 663-2777
Group Rate: \$63.00 per night + tax
Group block code: OHCWC

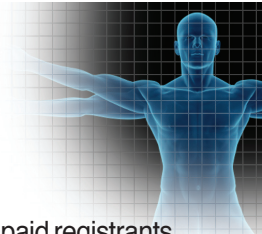
To receive the discounted rate, reserve your room by April 2. Breakfast and an evening happy hour are included.

PARKING

Parking is free! Tulsa Tech has an open parking policy (no designated parking). You may park in the visitor parking lots located at the north or south ends of the building. There is also parking available to the south of the Tulsa Tech Health Sciences Center building by the Tulsa Tech Training Center. When you enter the Health Sciences Center building, look for the registration table on the first floor.



“Bridging the Borders: Institutional & Interdisciplinary Collaboration”
Presented by the Oklahoma Health Care Workforce Center at the
Tulsa Tech - Health Sciences Center • Thursday, April 12, 2012



Registration Cost

The cost for attendees to register is \$175. Registration is on a first-come, first-serve basis and is limited to the first 200 paid registrants. Please note that due to limited space, participants will be officially registered once payment is received. Those registering on or after Monday, April 2, will pay a \$50 late fee. (CANCELTION POLICY: Requests for refunds must be received in writing before 8am on Monday, April 2, 2012. However, a \$50 service fee will be charged. There will be no refunds after April 2.)

Substitutions & Transfers

Registrants unable to attend may designate an alternate. Report substitutions to Shayla Austin at shayla@ohcwc.com or (405) 319-8690, prior to the conference. Transfers from one educational institution to another are not permitted.

Please print or type all information, which will be used to prepare an attendee name badge.

Registrations may be e-mailed to Shayla Austin at shayla@ohcwc.com or faxed to (405) 319-8698 by Monday, April 2.

Name _____

Title _____

Organization _____

Mailing Address _____

City, State, Zip _____

Business Phone () _____ E-mail _____

Will you need a certificate for continuing education credits? (circle one) No Yes (If yes, specify what type.) _____

**Please rank the following sessions in order of your preference from 1 to 5 (with 1 being most favored).
We will do our best to accommodate your top selections.**

My preference for Session #1 is:

- _____ Simulation Opportunities for Educators (Lecture)
- _____ Standardized Patients Scenario (Hands-On)
- _____ Spine Injured Athlete Scenario (Hands-On)
- _____ Closing the Gap Scenario (Hands-On)
- _____ *Up Close & Personal w/ Manikins (Hands-On)

My preference for Session #2 is:

- _____ Collaborative Success Stories (Lecture)
- _____ A Collaborative Surgery (Hands-On)
- _____ QSEN Scenario (Hands-On)
- _____ The Art of Moulage (Hands-On)
- _____ *Up Close & Personal w/ Manikins (Hands-On)

My preference for Session #3 is:

- _____ Simulation Opportunities for Hospitals (Lecture)
- _____ QSEN Scenario (Hands-On)
- _____ Cardiac Arrest Scenario (Hands-On)
- _____ The Art of Moulage (Hands-On)
- _____ *Up Close & Personal w/ Manikins (Hands-On)

** No continuing education credits will be given for this session.*

Choose Your Payment Method:

PURCHASE ORDERS WILL NOT BE ACCEPTED!

I am paying by credit card and will pay on the event's secured website link below:

<http://www.ohcwc.com/Conferences/Sim6.htm>

I am paying by check # _____.

If paying by check, make it payable to the "Oklahoma Health Care Workforce Center." Please mail the check and completed registration form to: Oklahoma Health Care Workforce Center, Attn: Shayla Austin, 655 Research Parkway, Suite 325, Oklahoma City, OK 73104.

I am guest of a sponsor.